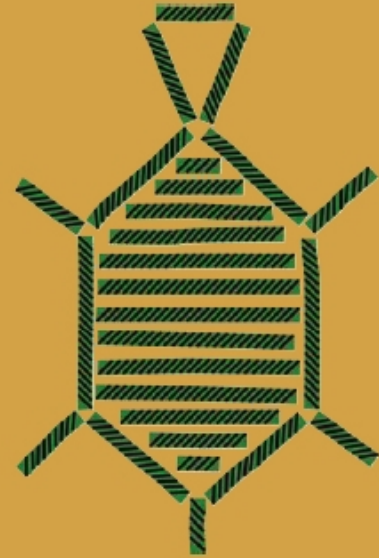


Turtlebacks™

by LMB Designs



from nature, for nature

ABOUT TURTLEBACKS

All designs are inspired by nature and are made from earth-friendly, locally sourced materials such as alpaca, chaguar, cashmere, and other exclusive fibers. LMB Designs' pet apparel collection, Turtlebacks, was inspired by the Diamondback Terrapin turtle. The Turtleback Signature Sweater was one of a few designs selected at the 2010 Fashion Institute of Technology Pet Fashion Show to travel the world with Pet Fashion Week.

The designs are handmade by women's collectives in Peru, Nepal, and Argentina to provide quality products while supporting fair trade practices and contributing to the economic independence of these communities. By supporting LMB Designs, customers not only receive a unique creation, but they also help save natural resources and give back to the world community.

SIZE CHART

(Back length measured from neck to tail)

XS: 7" - 8.5"

S: 9" - 10.5"

M: 11" - 16.5"

L: 17" - 22"



Lisa Barnes
LMB Designs
lmbdesigns.com
lisa@lmbdesigns.com
201.600.4915



Turtleback Signature Sweater



Inspired by the Diamondback Terrapin, this sweater is a stylish and artful tribute to the colorful abstract shapes of the turtle's shell.

Handmade from
100% superfine alpaca.

Sizes: XS, S, M, L
ITEM #100



About Alpaca:

One of the most luxurious and rarest of natural fibers, it is finer than cashmere, warmer than wool, stronger than mohair, and smoother than silk. It is naturally water-repellent, hypoallergenic, breathable, durable and a renewable natural resource.

Birch Branch Sweater



In the style of a fisherman's sweater, the elements are no match for this elegant and cozy sweater, supported with a sturdy spine of birch branches.

Handmade from
100% superfine alpaca.

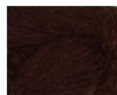
Sizes: XS, S, M, L
ITEM #200

Colors:

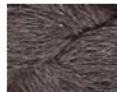
Snow



Bark



Ice



All sweaters are made with a unique ribbed chest panel, providing extra stretch for broad-chested breeds.
Sizes XS and S have harness holes, sizes M and L have leash holes.